

## Volume of Contracts Awarded by the Procuring Entities (PEs) in F/Y 2007/08

Procuring entities are required by the procurement regulations to submit to PPRA the name of winning tenders and the tender amounts to enable PPRA to keep track of all awarded contracts and compile procurement statistics. Unfortunately, only a few PEs have been complying with this requirement.

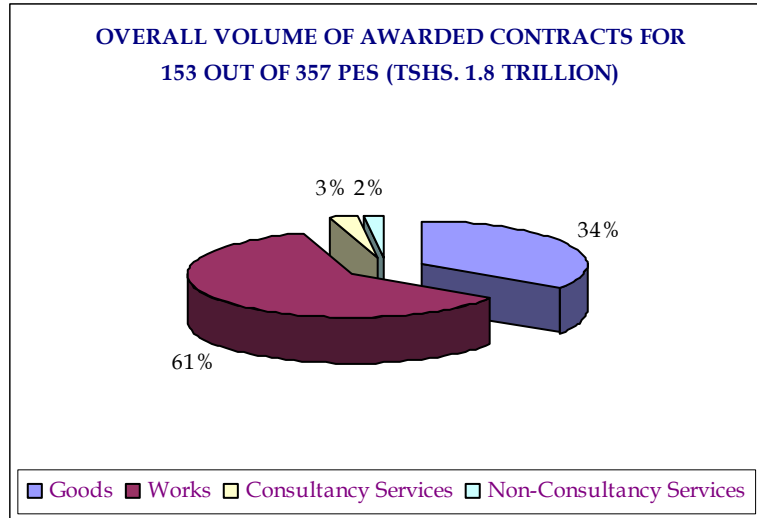
Following poor response by PEs to submit information on individual tender award, PPRA requested them towards the end of the financial year PPRA to submit a summary of awarded tenders giving the numbers and values of contracts awarded under the four categories, namely; goods, works, consultancy services and non-consultancy services. The summary of tenders awarded in terms of values is shown in **Annex 1**.

Out of 357 PEs, only 153 which is equivalent to 42.8 percent responded to PPRA's request to submit tender award information while 204 have so far failed to do so. The submitted information reveals that contracts amounting to Tshs. 1,800,974 million were awarded by these 153 PEs as shown in Table 1. If one assumes those PEs which responded to be representative sample, the value of awarded contracts would be more than is Tshs 3 Trillion, which is close to one half of the central Government budget for this financial year. A summary of values of contracts awarded by various categories of PEs and types of procurement is shown on **Table 5.1**. An analysis of the values shows that out of Tshs 1.8 trillion about 95 percent is for supply of goods and execution of works.

**Table 5.1: Summary of Volume of Tenders Awarded in million Tshs.**

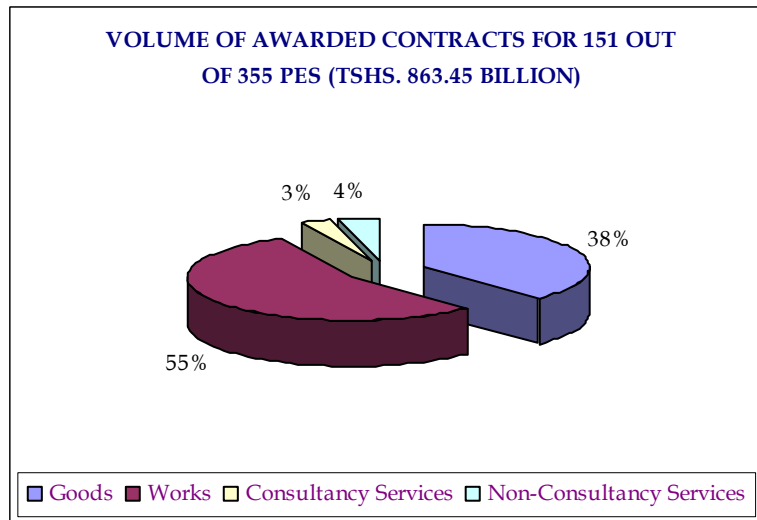
Category of PE	Goods	Works	Consultancy Services	Non-Consultancy Services	Total
Ministries	116,230	181,042	8,696	2,650	308,618
Parastatal Organisations	13,779	205,594	6,909	15,645	541,926
Executive Agencies	23,802	651,472	29,225	5,756	710,254
Urban Water and Sewerage Authorities	5,873	1,103	144	381	7,500
Independent Departments	131,520	1,062	744	6,843	140,169
Regional Administrative Secretariats	1,996	7589	527	828	10,940
Local Government Authorities	21,238	55,850	435	4,042	81,565
<b>Total</b>	<b>614,838</b>	<b>1,103,711</b>	<b>46,681</b>	<b>36,144</b>	<b>1,800,974</b>

The value of contracts for consultancy and non consultancy services is just about 5 percent of the total. The percentage distribution of values for different types of procurement is shown in **Figure 1** in terms of goods, works, consultancy services and non consultancy services.



**Figure 1:** Percentage Distribution of Volume of Awarded Tenders

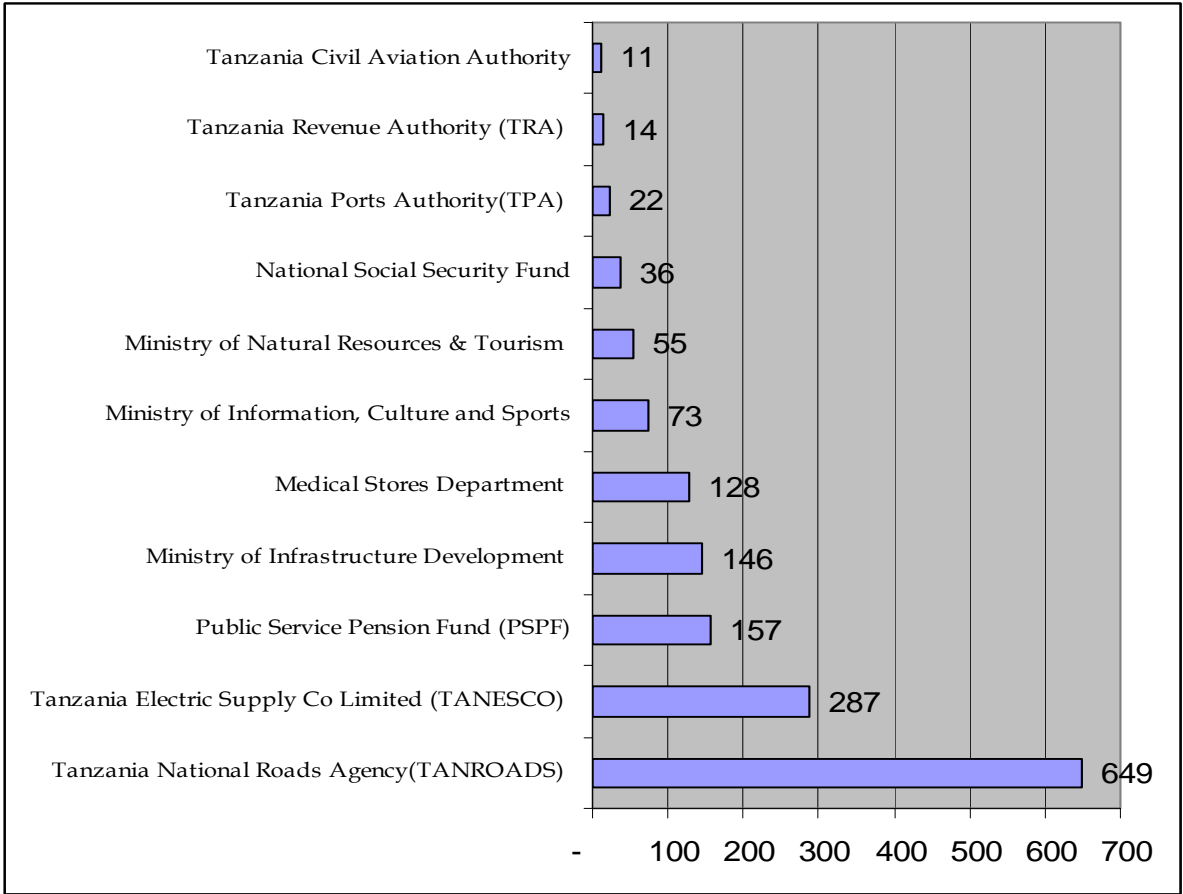
The results have been seriously influenced by two PEs, namely TANROADS and TANESCO. When the two PEs whose volume of procurement is close to Tshs 936 Billion are excluded the distribution changes as shown in **Figure 2**.



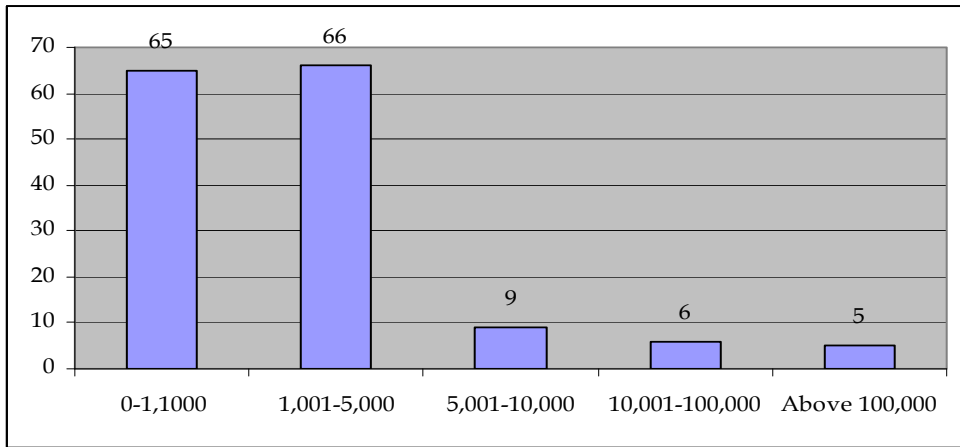
**Figure 2:** Percentage Distribution of Volume of Awarded Tenders (Excluding TANROADS and TANESCO).

The results show that on average, works contracts constitute the highest amount in terms of value of contracts awarded by the remaining PEs, followed by goods and very small amounts for consultancy and non-consultancy services.

Five PEs had total volume of awarded contracts above Tshs. 100 billion and only other six had volume of contracts between Tshs. 10 and 100 billion as shown in **Figure 3**. The overall distribution of values of contracts for all PEs is shown in **Figure 4**



**Figure 3:** PEs with Tender Volumes above Tshs. 10 billion



**Figure 4:** Distribution of Volume of Awarded Tenders by PEs

**ANNEX 1**  
**Volume of Tenders Awarded by PEs in F/y 2007/08**  
**in million tshs.**

Code No.	NAME OF THE ENTITY	GOODS	WORKS	CONSULTANCY SERVICES	NON-CONSULTANCY SERVICES	GRAND TOTAL
<b>MINISTRIES</b>						
ME/003	Prime Minister's Office Policy and Coordination	2,779	2,434	375	107	5,695
ME/004	Ministry of Finance and Economic Affairs	3,028	303	428	295	4,053
ME/006	Ministry of Communication ,Science & Technology	409	-	-	33	441
ME/009	Ministry of Industries, Trade & Marketing	436	15	60	108	618
ME/011	Ministry of Water and Irrigation	1,543	3,875	155	415	5,988
ME/013	Ministry of Foreign Affairs and international Co-operation	320	226	-	80	626
ME/014	Ministry of Home Affairs	2,245	780	254	20	3,299
ME/015	Ministry of Infrastructure Development	56,083	89,169	363	18	145,634
ME/016	Ministry of Community Development, Gender and Children	177	1,905	-	100	2,182
ME/017	Ministry of Lands, Housing & Human Settlement Development	1,350	3,812	670	266	6,098
ME/018	Ministry of Natural Resources & Tourism	44,970	6,783	2,846	122	54,721
ME/019	Ministry of Justice & Constitutional Affairs	326	56	-	22	404
ME/024	Ministry of Education & Vocational Training	1,658	866	137	947	3,607
ME/025	Ministry of Information, Culture and Sports	160	69,603	3,252	65	73,080
ME/026	Ministry of Labour Employment and Youth Development	720	1,131	44	52	1,946
ME/027	Ministry of East African Cooperation	28	86	112	-	225
<b>SUB TOTAL</b>		<b>116,230</b>	<b>181,042</b>	<b>8,696</b>	<b>2,650</b>	<b>308,618</b>

Code No.	NAME OF THE ENTITY	GOODS	WORKS	CONSULTANCY SERVICES	NON-CONSULTANCY SERVICES	GRAND TOTAL
<b>PARASTATAL ORGANIZATIONS</b>						
PA/OO1	Tanzania Electric Supply Co Limited (TANESCO)	286,206	377	265	450	287,297
PA/OO4	National Social Security Fund(NSSF)	3,416	32,199	-	-	35,616
PA/OO5	Public Service Pension Fund (PSPF)	393	151,481	5,493	119	157,486
PA/OO6	National Construction Council (NCC)	15	6	13	13	47
PA/OO7	Muhimbili University College of Health Sciences (MUCHS)	1,204	-	-	37	1,241
PA/OO8	Muhimbili Orthopaedic Institute (MOI)	626	-	-	306	933
PA/OO9	Muhimbili National Hospital	3,499	44	-	-	3,543
PA/O10	Ocean Road Cancer Institute	218	228	4	210	660
PA/O11	University of Dar Es Salaam	2,347	1,320	-	1,247	4,914
PA/O12	Sokoine University of Agriculture	704	6,077	114	164	7,059
PA/O13	Mzumbe University	566	2,500	149	4,448	7,664
PA/O14	Ardhi University	475	608	7	375	1,466
PA/O15	Dar Es Salaam Institute of Technology (DIT)	138	-	-	149	286
PA/O17	Institute of Accountancy Arusha (IAA)	228	-	-	28	257
PA/O18	Open University of Tanzania (OUT)	1,239	-	84	340	1,663
PA/O19	National Institute for Medical Research(NIMR)	-	-	-	28	28
PA/O21	College of Business Education(CBE)	190	-	-	18	208
PA/O22	The Mwl. Nyerere Memorial Academy (Kivukoni)	153	921	25	-	1,099
PA/O23	Moshi University College of Cooperative and Business Studies	448	246	-	13	708
PA/O25	Kibaha Education Centre	514	93	-	135	742
PA/O31	Tanzania Petroleum Development Corporation (TPDC)	302	-	36	-	339
PA/O32	Tanzania Telecommunication Co Limited (TTCL)	154	708	477	1,668	3,007
PA/O36	Tanzania Tourist Board	268	2	-	19	289

Code No.	NAME OF THE ENTITY	GOODS	WORKS	CONSULTANCY SERVICES	NON-CONSULTANCY SERVICES	GRAND TOTAL
PA/O37	Tanzania National Parks (TANAPA)	1,667	-	-	4,463	6,129
PA/O45	National Examination Council of Tanzania (NECTA)	1,089	-	-	363	1,451
PA/O46	Tanzania Library Services	209	-	-	-	209
PA/O52	National Board of Accountants and Auditors (NBAA)	355	-	-	30	385
PA/O53	Tanzania Automotive Technology Centre-Nyumbu	187	-	-	117	304
PA/O62	National Museum Tanzania(NMT)	-	5,582	-	77	5,659
PA/O71	National Health Insurance Fund(NHIF)	985	2,435	124	-	3,544
PA/O74	Tanzania Investment Bank	106	91	-	139	335
PA/O79	National College of Tourism	-	228	19	36	284
PA/O84	Tanzania Broadcasting Cooperation	3,563	176	-	98	3,837
PA/O88	Gaming Board of Tanzania	89	-	3	4	96
PA/O91	Tanzania Posts Corporation (TPC)	1,554	181	-	108	1,842
PA/O92	Tanzania Postal Bank(TPB)	418	-	86	443	947
PA/102	Forest Training Institute Olmotonyi Arusha	253	90	8	-	352
<b>SUBTOTAL</b>		<b>313,779</b>	<b>205,594</b>	<b>6,909</b>	<b>15,645</b>	<b>541,926</b>
<b>AGENCIES</b>						
AE/001	Tanzania National Roads Agency(TANROADS)	2,013	625,223	21,965	38	649,240
AE/004	Tanzania Food & Drug Agency	1,041	-	227	104	1,372
AE/006	Tanzania Electrical, Mechanical & Electronics Services Agency (TEMESA)	1,246	157	95	353	1,851
AE/009	Drilling and Dam Construction Agency(DDCA)	3	1	0	0	4
AE/012	Tanzania Building Agency(TBA)	84	5,755	-	-	5,839
AE/016	Tanzania Ports Authority(TPA)	9,047	4,423	4,378	3,769	21,616
AE/018	Public Procurement Regulatory Authority(PPRA)	782	-	1,096	15	1,894
AE/020	Tanzania Communication Regulatory Authority(TCRA)	340	19	212	734	1,305

Code No.	NAME OF THE ENTITY	GOODS	WORKS	CONSULTANCY SERVICES	NON-CONSULTANCY SERVICES	GRAND TOTAL
AE/021	Capital Development Authority (CDA)	158	608	746	-	1,512
AE/023	Tanzania Revenue Authority (TRA)	6,570	6,721	421	622	14,334
AE/025	Surface Marine Transport Regulatory Authority (SUMATRA)	198	-	15	122	334
AE/028	Tanzania Civil Aviation Authority(TCAA)	2,320	8,564	70	-	10,954
<b>SUB TOTAL</b>		<b>23,802</b>	<b>651,472</b>	<b>29,225</b>	<b>5,756</b>	<b>710,254</b>
<b>URBAN WATER AND SEWERAGE AUTHORITIES</b>						
AE/029	UWASA - Arusha	3,112	103	16	-	3,230
AE/031	UWASA - Bukoba	101	39	-	-	140
AE/034	UWASA - Dodoma	1,066	299	50	69	1,483
AE/035	UWASA - Iringa	269	27	-	-	296
AE/039	UWASA - Moshi	741	-	-	77	818
AE/040	UWASA - Musoma	228	-	-	-	228
AE/043	UWASA - Singida	147	-	-	-	147
AE/052	National Bureau of Statistics	209	636	79	235	1,159
<b>SUB TOTAL</b>		<b>5,873</b>	<b>1,103</b>	<b>144</b>	<b>381</b>	<b>7,500</b>
<b>INDEPENDENT DEPARTMENTS</b>						
IE/004	Tanzania Law Reform Commission	12	-	93	50	155
IE/005	Prevention and Combating of Corruption Bureau (PCCB)	488	-	131	-	619
IE/006	National Assembly	398	-	-	2,006	2,405
IE/009	Medical Stores Department	126,299	493	131	1,077	127,999
IE/011	Tanzania Social Action Fund (TASAF)	48	14	321	-	383
IE/016	Court of Appeal	3,799	-	-	2,978	6,777
IE/017	Commission for Human Rights and Good Governance(CHRAGG)	139	-	68	27	235
IE/018	National Electoral Commission (NEC)	336	555	-	705	1,596
<b>SUB TOTAL</b>		<b>131,520</b>	<b>1,062</b>	<b>744</b>	<b>6,843</b>	<b>140,169</b>
<b>REGIONAL ADMINISTRATIVE SECRETARIAT</b>						

Code No.	NAME OF THE ENTITY	GOODS	WORKS	CONSULTANCY SERVICES	NON-CONSULTANCY SERVICES	GRAND TOTAL
RAS/001	ARUSHA	1,388	588	81	577	2,634
RAS/004	KIGOMA	44	897	89	-	1,030
RAS/008	MOROGORO	63	701	-	156	920
RAS/010	MARA	-	587	-	-	587
RAS/013	PWANI	-	440	-	38	478
RAS/015	TANGA	-	1,642	-	-	1,642
RAS/016	TABORA	-	854	-	-	854
RAS/019	KAGERA	-	428	355	-	783
RAS/020	DAR ES SALAAM	319	337	2	57	715
RAS/021	MANYARA	181	1,116	-	-	1,297
<b>SUB TOTAL</b>		<b>1,996</b>	<b>7,589</b>	<b>527</b>	<b>828</b>	<b>10,940</b>
<b>LOCAL GOVERNMENT AUTHORITIES</b>						
LGA/001	Meru District Council	280	766	-	-	1,046
LGA/007	Arusha District Council	511	356	-	74	942
LGA/010	Kibaha District Council	-	314	-	-	314
LGA/012	Mkuranga District Council	27	1,065	158	12	1,262
LGA/013	Rufiji District Council	68	832	-	15	914
LGA/014	Bagamoyo District Council	122	1,729	42	117	2,010
LGA/017	Kinondoni Municipal Council	129	754	-	16	899
LGA/020	Dodoma Municipal Council	593	1,435	-	195	2,223
LGA/022	Kongwa District Council	537	777	-	59	1,373
LGA/023	Mpwapwa District Council	138	981	-	2	1,121
LGA/024	Bahi District Council	618	922	-	-	1,540
LGA/025	Iringa Municipal Council	284	379	-	72	735
LGA/030	Ludewa District council	283	758	22	-	1,064
LGA/031	Njombe District Council;	927	2,157	-	75	3,159
LGA/032	Biharamulo District Council	617	172	-	11	801
LGA/035	Bukoba District Council	546	340	27	-	913

Code No.	NAME OF THE ENTITY	GOODS	WORKS	CONSULTANCY SERVICES	NON-CONSULTANCY SERVICES	GRAND TOTAL
LGA/036	Ngara District Council	27	781	-	31	840
LGA/037	Muleba District Council	638	766	-	9	1,413
LGA/039	Chato District Council	488	372	-	139	999
LGA/042	Kigoma Town Council	358	532	-	-	891
LGA/043	Kigoma District Council	1,243	891	15	1	2,150
LGA/047	Hai District Council	0	457	-	90	548
LGA/048	Mwanga District Council	667	1,503	-	-	2,170
LGA/049	Same District Council	104	631	-	8	743
LGA/051	Nachingwea District Council	156	275	20	-	451
LGA/052	Lindi District Council	22	1,272	-	-	1,294
LGA/053	Lindi Town Council	90	213	-	65	367
LGA/054	Liwale District Council	32	396	-	-	428
LGA/059	Hanang District Council	791	779	-	25	1,594
LGA/060		-	446	-	-	446
LGA/062	Simanjiro District Council	503	2,075	-	44	2,621
LGA/065	Bunda District	254	1,659	-	21	1,934
LGA/067	<a href="#">Tarime District</a>	839	-	-	-	839
LGA/071	Rungwe District Council	-	1,514	-	-	1,514
LGA/072	Ileje District Council	328	1,115	-	19	1,462
LGA/073	Mbozi District Council	643	1,283	-	190	2,116
LGA/074	Kyela District Council	171	1,741	11	22	1,945
LGA/076	Mbarali District Council	67	1,014	-	-	1,081
LGA/079	Morogoro Municipal Council	386	759	21	294	1,460
LGA/089	Mwanza City Council	22	2,056	22	304	2,403
LGA/090	Magu District Council	235	1,265	-	193	1,693
LGA/091	Geita District Council	693	863	-	108	1,665
LGA/092	Ukerewe District Council	26	1,316	-	510	1,852
LGA/093	Misungwi District Council	293	871	-	52	1,216

Code No.	NAME OF THE ENTITY	GOODS	WORKS	CONSULTANCY SERVICES	NON-CONSULTANCY SERVICES	GRAND TOTAL
LGA/096	Kwimba District Council	136	931	4	19	1,090
LGA/097	Sumbawanga District Council	700	703	9	-	1,413
LGA/098	Sumbawanga Municipal Council	496	241	38	-	775
LGA/100	Nkasi District Council	642	382	6	-	1,030
LGA/102	Songea District Council	426	243	-	31	700
LGA/103	Songea Municipal Council	174	167	-	1	342
LGA/110	Meatu District Council	254	421	-	-	675
LGA/111	Bariadi District Council	902	3,401	-	42	4,345
LGA/112	Shinyanga Municipal Council	667	1,503	-	-	2,170
LGA/117	Manyoni District Council	163	395	33	61	652
LGA/120	Nzega District Council	173	654	2	184	1,013
LGA/121	Sikonge District Council	171	1,430	-	-	1,600
LGA/123	Igunga District Council	569	956	-	9	1,535
LGA/124	Tabora Municipal Council	222	389	3	852	1,467
LGA/125	Korogwe District Council	399	1,190	-	25	1,615
LGA/126	Korogwe Town Council	131	1,851	-	-	1,982
LGA/129	Pangani District Council	151	175	-	-	326
LGA/130	Lushoto District Council	104	232	-	46	383
<b>SUB TOTAL</b>		<b>21,238</b>	<b>55,850</b>	<b>435</b>	<b>4,042</b>	<b>81,565</b>
<b>TOTAL</b>		<b>614,438</b>	<b>1,103,711</b>	<b>46,681</b>	<b>36,144</b>	<b>1,800,974</b>